

# medin **SINDI**<sup>®</sup> nCPAP driver

Comprehensive respiratory support for  
prematures and newborns from the first  
minute of life.



Mode nCPAP  
with Medijet<sup>®</sup>



- Variable Flow
- Flow controlled up to 16 l
- Modified benveniste valve
- Pressure and O<sub>2</sub> measurement with alarm

Mode HHHFNC  
Heated humidified  
high flow nasal canula

- O<sub>2</sub> measurement with alarm
- Change to Medijet<sup>®</sup> by using same circuit



*Giving future...*

**medin**<sup>®</sup>  
medical innovations

## Circuits for Medijet® and Nasal Canulas

REF	Name	Diameter connectors	Inspiration/expiration	Additional connectors	Heated	Accessories	Single use/reuse
1207	Patient circuit	F22, M7.4	Inspiration	1x softconnector; 1x silicone piece; M22/ M15; F22/ M22; M22/M22	Yes - for F&P 850	No	Single use
1207 MKI	Patient circuit	F22, M7.4	Inspiration	1x softconnector; 1x silicone piece; M22/ M15; F22/ M22; M22/M22	Yes - for F&P 850	Chamber	Single use

### Medijet®



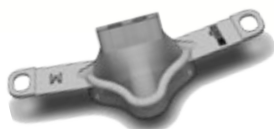
REF	Name	Single use/reuse
1000	Medijet® (20pieces/unit)	Single use
1000-10	Medijet® Starter Set (for 10 patients)	Single use
1000-20	Medijet® Starter Set (for 20 patients)	Single use

For detailed information concerning the Starter Sets please look at our product catalogue or contact our customer support.



### Prongs

Size	x-small	small	medium	large	x-large	medium wide	largewide
REF	1200-01	1200-21	1200-02	1200-22	1200-03	1200-32	1200-33
Nostril Ø [mm]	3	3.5	4.1	4.75	5.5	3.7	5
Packing unit	10	10	10	10	10	10	10



### Masks

Size	small	medium	large	x-large
REF	1200-04	1200-05	1200-06	1200-07
Mask width nose [mm]	18.5	21.0	23.0	26.0
Packing unit	10	10	10	5



### Bonnets - Disposable

Size	XXS	XS	S	M	L	XL	XXL	XXXL
REF	1213-10	1214-10	1215-10	1216-10	1217-10	1218-10	1219-10	1220-10
Head circumference [cm]	17 - 19	19 - 21	21 - 23	23 - 25.5	25.5 - 28	28 - 30	30 - 33	33 - 36
Packing unit	10	10	10	10	10	10	10	10

### Comfort Soft Plus



REF	QTY	Name	Size	Flow rate
1390	3/size	Set with three sizes (premature, neonatal, paediatric)	all three	depends on size

[www.medingmbh.com](http://www.medingmbh.com)



medin Medical Innovations GmbH  
 Adam- Geisler- Str. 1  
 82140 Olching, Germany  
 Phone: +49 8142 448 460  
 info@medingmbh.com



REV01

Subject to change without notice.